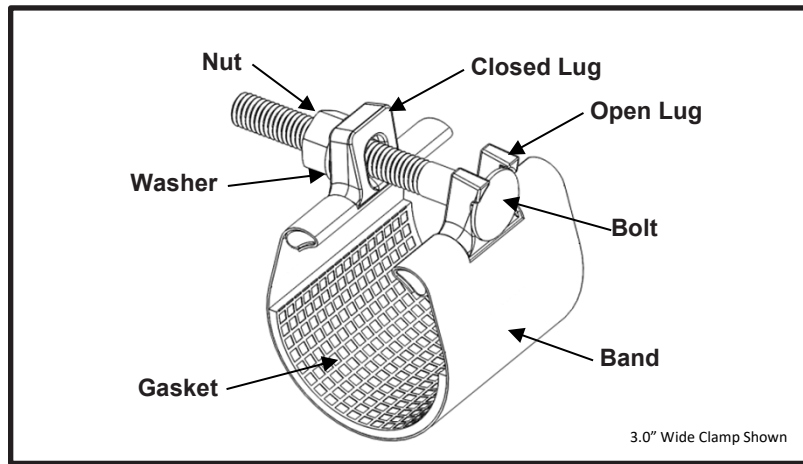




Smith-Blair  
a xylem brand

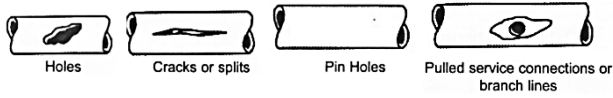
# SPECIFICATION REDI-CLAMP® MODEL 245



## APPLICATIONS

### Typical Uses

- Repair leaks due to punctures, splits, or holes
- Examples:



### Standard Pipe Sizes

- 0.5" to 12" nominal

### Standard Widths

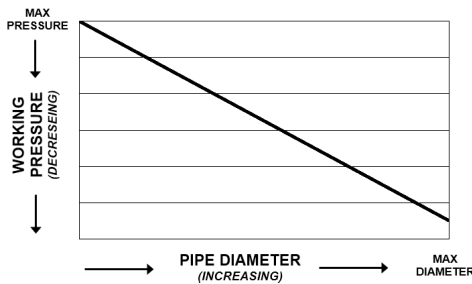
- 3.0", 6.0", 9.0", 12.0"

### Type of Pipe

- Carbon Steel, Stainless Steel, PVC, Copper

### Working Pressure

- Up to 150 psi depending on type of pipe, type of repair, pipe diameter, service conditions, and installation workmanship





Smith-Blair  
a xylem brand

# SPECIFICATION

## REDI-CLAMP®

### MODEL 245

---

#### MATERIALS

- **Band**
  - Type 304 Stainless Steel per ASTM A240
  - Band Thickness: 24 gauge thick for clamps 2.88" diameter and smaller  
22 gauge thick for clamps 3.00" diameter and larger
  - Formed to pipe O.D. and secured to lug body
  - Double band supplied on nominal pipe sizes 10" and larger
- **Lug**
  - Cast using Ductile Iron 65-45-12 per ASTM A536
  - Flexi-Coat® fusion bonded epoxy finish
  - Designed for drop in replaceable bolts
  - One open loop lug and one closed loop lug. The bolts do not have to be removed to install clamp, preventing lost hardware
  - Remaining opening(s) have closed-closed loop lugs securing clamp sections together for ease of installation
  - Precision cast with contoured surface to equalize clamping pressures around the pipe
- **Gasket**
  - Nitrile (Buna-N) per ASTM D2000
  - Gasket Thickness: 0.125"
  - Compounded to resist water, oil, natural gas, acids, alkalis, most (aliphatic) hydrocarbon fluids., and many other chemicals
  - Temperature range: -20°F to +180°F
  - Finely gridded surface conform to irregularities on the pipe surface and provide superior sealing on rough or pitted areas
  - Gasket spans approximately 180° of the clamp diameter and is positioned to provide superior sealing at the point of leak
- **Bolt**
  - Carbon Steel SAE J429 GR5
  - Fe/Zn coated per ASTM F1941-10
  - Size: 0.5" – 1.5" nominal pipe size = 3/8"-16UNC x 3.00" long, Round Head Square Neck  
2.0" – 5.0" nominal pipe size = 7/16"-14UNC x 4.00" long, Round Head Square Neck  
6.0" – 12.0" nominal pipe size = 7/16"-14UNC x 5.00" long, Round Head Square Neck
  - Rolled threads for improved physical characteristics, greater thread accuracy, and smooth surface finish
  - Drop in replaceable bolts
- **Nut**
  - Carbon Steel per ASTM A307
  - Fe/Zn coated per ASTM F1941-10
  - Size: 0.5" – 1.5" nominal pipe size = 3/8"-16UNC Heavy Hex  
2.0" – 12.0" nominal pipe size = 7/16"-14UNC Heavy Hex
- **Washer**
  - Carbon Steel per ASTM A108
  - Fe/Zn coated per ASTM F1941-10
  - Size: 7/16" Type A Plain



Smith-Blair  
a xylem brand

# SPECIFICATION

## REDI-CLAMP®

### MODEL 245

---

#### LISTINGS/STANDARDS

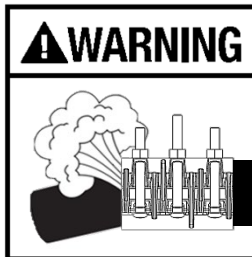
- Certified to NSF/ANSI 61 and NSF/ANSI 372
- Flexi-Coat® Fusion-Bonded Epoxy Coating meets requirements of AWWA C213

#### OPTIONS

- Type 316 Stainless Steel band
- Type 304 Stainless Steel hardware with fluoropolymer coated nuts to prevent galling
- Type 316 Stainless Steel hardware with fluoropolymer coated nuts to prevent galling
- Alternative gasket material (e.g. Viton, EPDM, etc.)
- 0.25" thick gasket
- Lug to lug gasket span

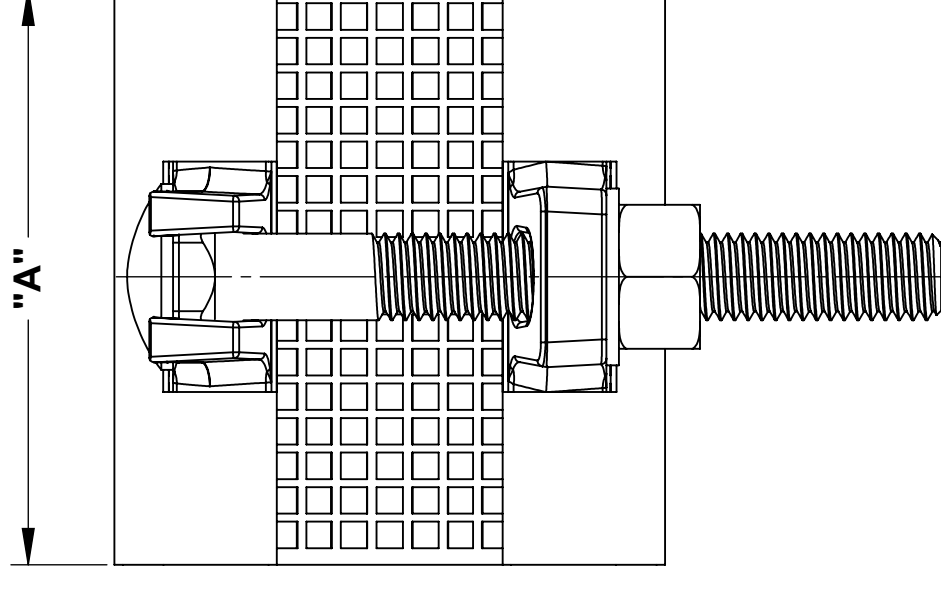
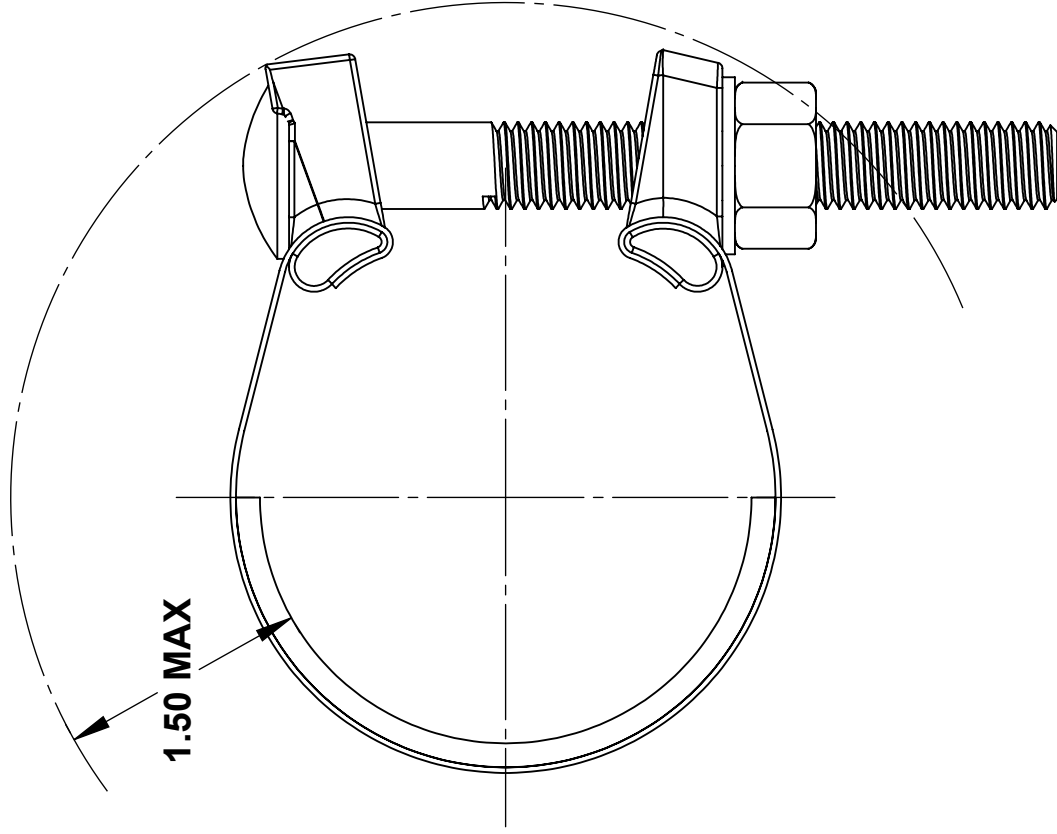
#### NOTES

- Clamp may be used for most water and gas applications with the exception of gas plastic pipe repair. It is suitable for restoring shape and marking crimped polyethylene gas service lines.
- Redi-Clamp® is a registered trademark of Smith-Blair
- These product specifications were correct at the time of publication and are subject to change without notice
- See the Smith-Blair website for part numbers and ordering information
- See the Smith-Blair website for warranty information
- See the Smith-Blair website for corrosion notice



**THIS PRODUCT DOES NOT RESTRAIN PIPE MOVEMENT.** Proper anchoring is required to prevent pipe pull out. Failure to anchor or improper anchoring can result in dangerous pipe content escape, property damage, serious injury, and/or death. Read the product installation instructions prior to installing this product.

30 Globe Ave, Texarkana, AR 71854  
Ph: 870-773-5127 • Fax: 870-773-5212  
Toll-Free Numbers: Ph: 800-643-9705 • Fax: 800-648-6792



| NOMINAL PIPE SIZE | A     | HARDWARE SIZE |            | SOCKET SIZE |
|-------------------|-------|---------------|------------|-------------|
|                   |       | QUANTITY      | SIZE       |             |
| 0.5 - 1.50        | 3.00  | 1             | 3/8" x 3"  | 11/16"      |
|                   | 6.00  | 2             |            |             |
| 2 - 5             | 3.00  | 1             | 7/16" x 4" | 3/4"        |
|                   | 6.00  | 2             |            |             |
|                   | 9.00  | 3             |            |             |
|                   | 12.00 | 4             |            |             |
| 6 - 8             | 3.00  | 1             | 7/16" x 5" |             |
|                   | 6.00  | 2             |            |             |
|                   | 9.00  | 3             |            |             |
|                   | 12.00 | 4             |            |             |
| 10 - 12           | 3.00  | 2             |            |             |
|                   | 6.00  | 4             |            |             |
|                   | 9.00  | 6             |            |             |
|                   | 12.00 | 8             |            |             |

- NOTES:**
1. SEE SMITH-BLAIR CATALOG FOR AVAILABLE PIPE DIAMETER AND WIDTH COMBINATIONS AS SOME COMBINATIONS ARE NOT AVAILABLE
  2. 3.00" WIDE CLAMP SHOWN OTHER SIZES SIMILAR
  3. 10" - 12" CLAMPS INCORPORATE A TWO PIECE DESIGN USING CLOSED-CLOSED LUGS ON SECOND OPENING

|  |  |              |      |
|--|--|--------------|------|
| TOLERANCES U.N.O.<br>XX= ±.03<br>XXX= ±.015<br>FRACTIONS= 1/16"<br>ANGLES= ±1°<br>MACH. FIN= | NOTES:<br>REMOVE BURRS<br>AND SHARP EDGES<br>DO NOT SCALE DWG. | APP'D        | DATE |
| SCALE: N/A   | DRN  | CHD          | DATE |
| ALL DIMENSIONS ARE IN INCHES.  |  | DRN          | DATE |
| <b>TITLE</b><br><b>SPECIFICATION</b><br><b>REDI-CLAMP®</b><br><b>MODEL 245</b>               |  |              |      |
| P/N  |  | N/A          |      |
| DWG. NO.   |  | SPEC_245.DRW |      |
| REV.   |  | 1 OF 1 SHEET |      |
| REV.   |  | 6/28/16      |      |

