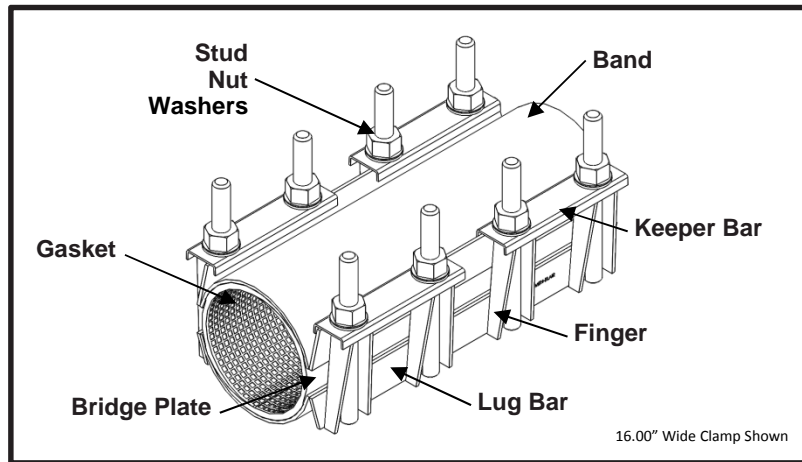


# SPECIFICATION

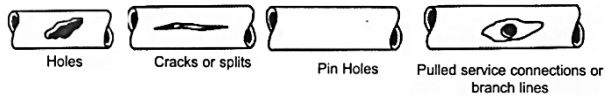
## HIGH PRESSURE FULL CIRCLE<sup>®</sup> REPAIR CLAMP ALL STAINLESS

### MODEL 268-000

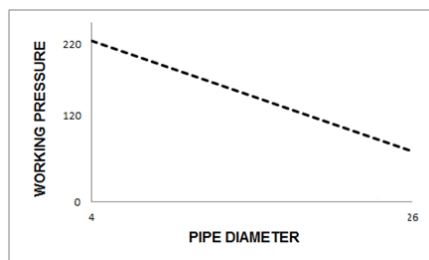


#### APPLICATIONS

- **Typical Uses**
  - Repair leaks due punctures, splits or holes (*not for full break*)
  - Examples:



- **Standard Pipe Sizes**
  - 4" to 26" nominal
- **Standard Widths**
  - 12.0", 16.0", 20.0"
- **Type of Pipe**
  - Carbon Steel, Stainless Steel, Ductile Iron, PVC, HDPE DR17 or thicker (with optional spring washers), Asbestos Cement, Copper, Aluminum
- **Working Pressure**
  - Up to 225 psi depending on type of pipe, type of repair, pipe diameter, service conditions and installation workmanship



#### MATERIALS

- **Band**
  - Type 304 Stainless Steel per ASTM A240
  - Band thickness ranges from 11 gauge to 0.25" depending on the diameter



# SPECIFICATION

## HIGH PRESSURE FULL CIRCLE<sup>®</sup> REPAIR CLAMP ALL STAINLESS

### MODEL 268-000

---

- **Finger**
  - Type 304 Stainless Steel per ASTM A240
  - Finger Thickness: 10 gauge
  - Solution annealed for increased corrosion resistance and strength
  - Long fingers allow for up to 0.80 inches of range (0.40 inches per side) in clamp
- **Lug Bar**
  - Type 304 Stainless Steel per ASTM A240
  - Lug Bar Thickness: 10 gauge
  - Solution annealed for increased corrosion resistance and strength
  - Spans entire width of clamp for uniform distribution of clamping force
- **Keeper Bar**
  - Type 304 Stainless Steel per ASTM A240
  - Keeper Bar Thickness: 14 gauge
  - Solution annealed for increased corrosion resistance and strength
  - Helps pull clamp around the pipe and closes the clamp during installation
- **Gasket**
  - Nitrile (Buna-N) per ASTM D2000
  - Gasket Thickness: 0.250"
  - NSF/ANSI 61 and 372 certified
  - Compounded to resist water, oil, natural gas, acids, alkalies, most (aliphatic) hydrocarbon fluids, and many other chemicals
  - Temperature range: -20°F to +180°F
  - Full 360° gridded face gasket provides maximum pipe support, reinforcement, and sealing pressure
  - Tapered ends allow for full circumferential sealing
- **Bridge Plate**
  - Type 304 Stainless Steel quarter hard per ASTM A240
  - Molded and recessed into gasket
  - Preformed for uniform distribution of gasket pressure over the entire pipe circumference
- **Stud**
  - Type 304 Stainless Steel per ASTM A276
  - Epoxy coated threads to prevent galling
  - 5/8"-11UNC, Stud
  - Rolled threads for improved physical characteristics, greater thread accuracy, and smooth surface finish
- **Nut**
  - Type 304 Stainless Steel GR. 8 per ASTM A194
  - Fluoropolymer coated to prevent galling
  - 5/8"-11UNC, Heavy Hex Semi-Finished
- **Steel Washer**
  - Type 304 Stainless Steel per ASTM A240
  - 5/8" Type A Plain
- **Nylon Washer**
  - Nylon 6/6
  - 5/8" Type A Plain
  - Located on top of Steel Washer for better transfer of bolt torque
- **Welding**
  - Welds accomplished using qualified welders
  - GMAW weld process utilized
  - Welds passivated to preserve corrosion resistance



# SPECIFICATION

## HIGH PRESSURE FULL CIRCLE<sup>®</sup> REPAIR CLAMP ALL STAINLESS

### MODEL 268-000

---

#### LISTINGS

- UL certified to NSF/ANSI 61 and 372
- Meets applicable AWWA C230 standards

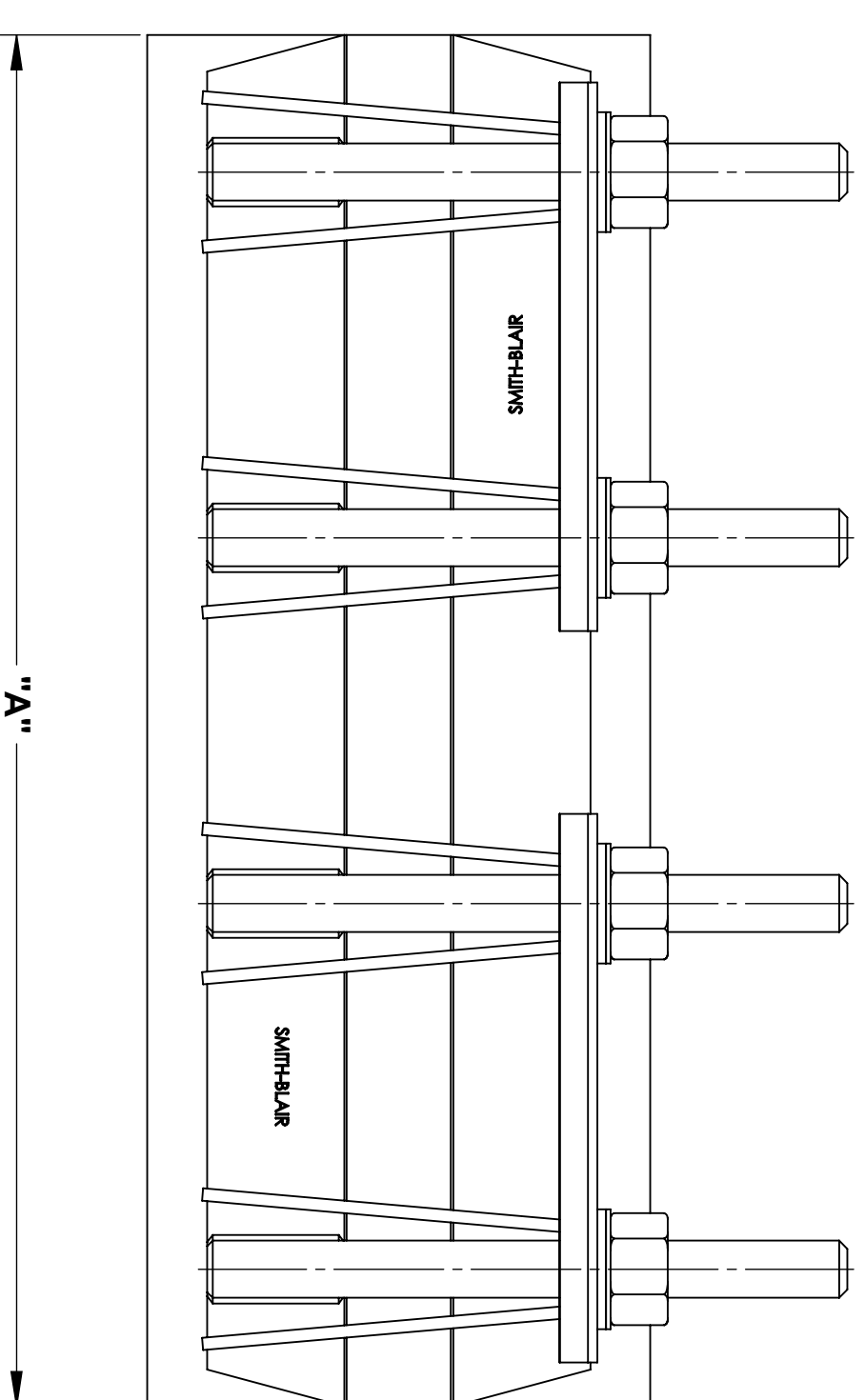
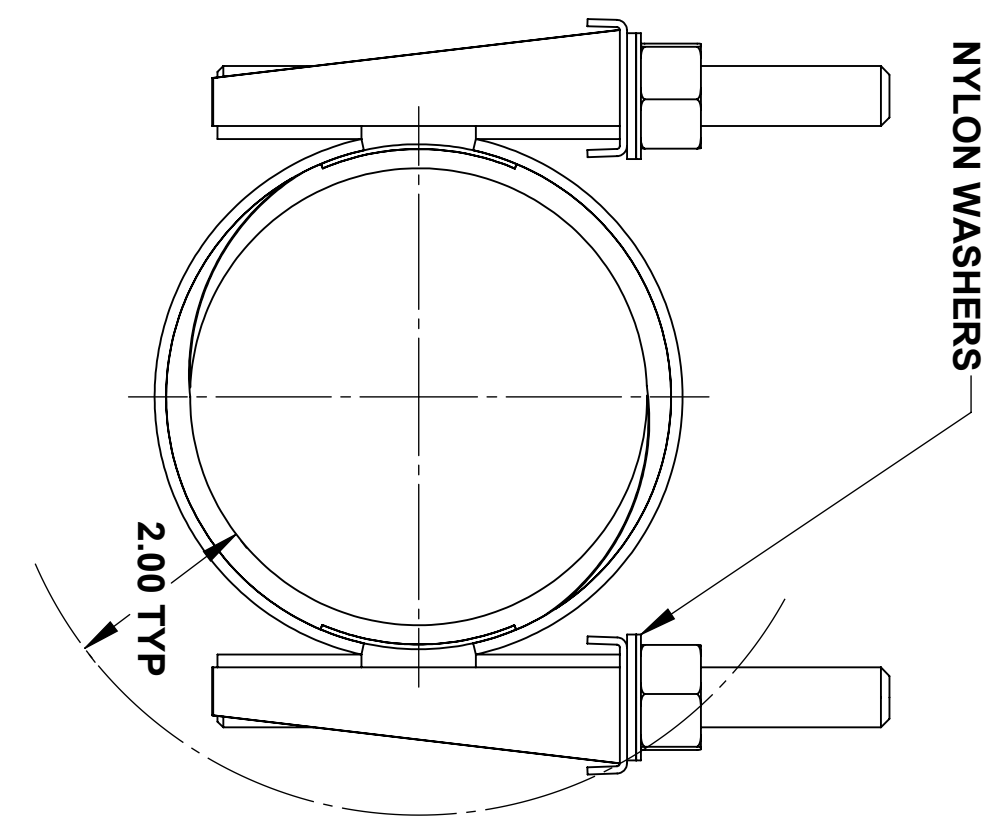
#### OPTIONS

- Type 316 Stainless Steel band
- Type 316 Stainless Steel hardware with fluoropolymer coated nuts to prevent galling
- Alternative gasket material (e.g. Viton, EPDM, etc.)
- Spring washers for use of clamp on HDPE pipe
- Offset gaskets to allow for repairing longer cracks using multiple clamps
- Conductivity conductor feature
- Clamps up to 30" wide

#### NOTES

- This product **does not** restrain the pipe from pulling out of the fitting
- **Do not** use for repair of full breaks or joining pipe
- Spring washers **are required** when this product is used on DR17 or thicker HDPE pipe
- Full Circle<sup>®</sup> is a registered trademark of Smith-Blair Inc.
- These product specifications were correct at the time of publication and are subject to change without notice
- See the Smith-Blair<sup>®</sup> web site for part numbers and ordering information
- See the Smith-Blair<sup>®</sup> web site for warranty information
- See the Smith-Blair<sup>®</sup> web site for corrosion warnings

30 Globe Ave, Texarkana, AR 71854  
Ph: 870-773-5127 • Fax: 870-773-5212  
Toll-Free Numbers: Ph: 800-643-9705 • Fax: 800-648-6792



- NOTES:**
1. SEE SMITH-BLAIR CATALOG FOR AVAILALE PIPE DIAMETER AND WIDTH COMBINATIONS AS SOME COMBINATIONS ARE NOT AVAILABLE
  2. 16.00" WIDE CLAMP SHOWN OTHER SIZES SIMILAR.

A	KEEPER BAR		HARDWARE			SOCKET SIZE
	QUANTITY	SIZE	QUANTITY	STUD SIZE	WASHERS SIZE	
12.00	2	10.00	6	5/8" x 6"	5/8"	1-1/16"
16.00	4	6.00	8			
20.00	4	2X - 14.00 2X - 5.00	14			

**CERTIFIED TO NSF/ANSI 61-G & 372**

TOLERANCES U.N.O. XX= ±.03 XXX= ±.015 FRACTIONS= ±.015 ANGLES=+1° MACH. FIN=		NOTES: REMOVE BURRS AND SHARP EDGES DO NOT SCALE DWG.		APP'D	DATE
ALL DIMENSIONS ARE IN INCHES.		SCALE:	N/A	DRN	DATE
				CHD	6/8/15

**TITLE**  
**SPECIFICATION**  
 HIGH PRESSURE FULL CIRCLE® REPAIR CLAMP ALL STAINLESS  
 MODEL 268-000

**SMITH-BLAIR, Inc.**  
 TEXARKANA, ARKANSAS

P/N: N/A  
 SPEC\_268-000.DRW  
 DWG. NO.

1 OF 1 SHEET  
 5-18-16 REV.