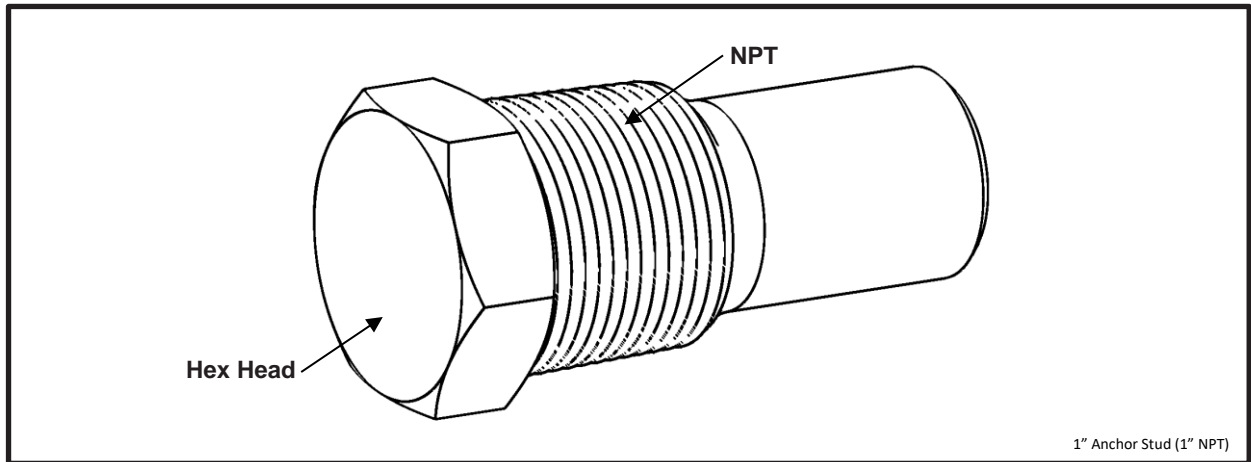




Smith-Blair
a xylem brand

SPECIFICATION ANCHOR STUDS (PIPE RESTRAINT)



1" Anchor Stud (1" NPT)

APPLICATIONS

- **Typical Uses**
 - Restraining pipe joints subjected to moderate longitudinal stresses
- **Standard Pipe Sizes**
 - Most
- **Type of Pipe**
 - Ductile Iron, Steel
- **Working Pressure**
 - Based on application

MATERIALS

- **5/8" Anchor Stud (1/2" NPT)**
 - Carbon Steel per ASTM A108 GR 1144CD
- **1" Anchor Stud (1" NPT)**
 - Carbon Steel per ASTM A108 GR 1144CD

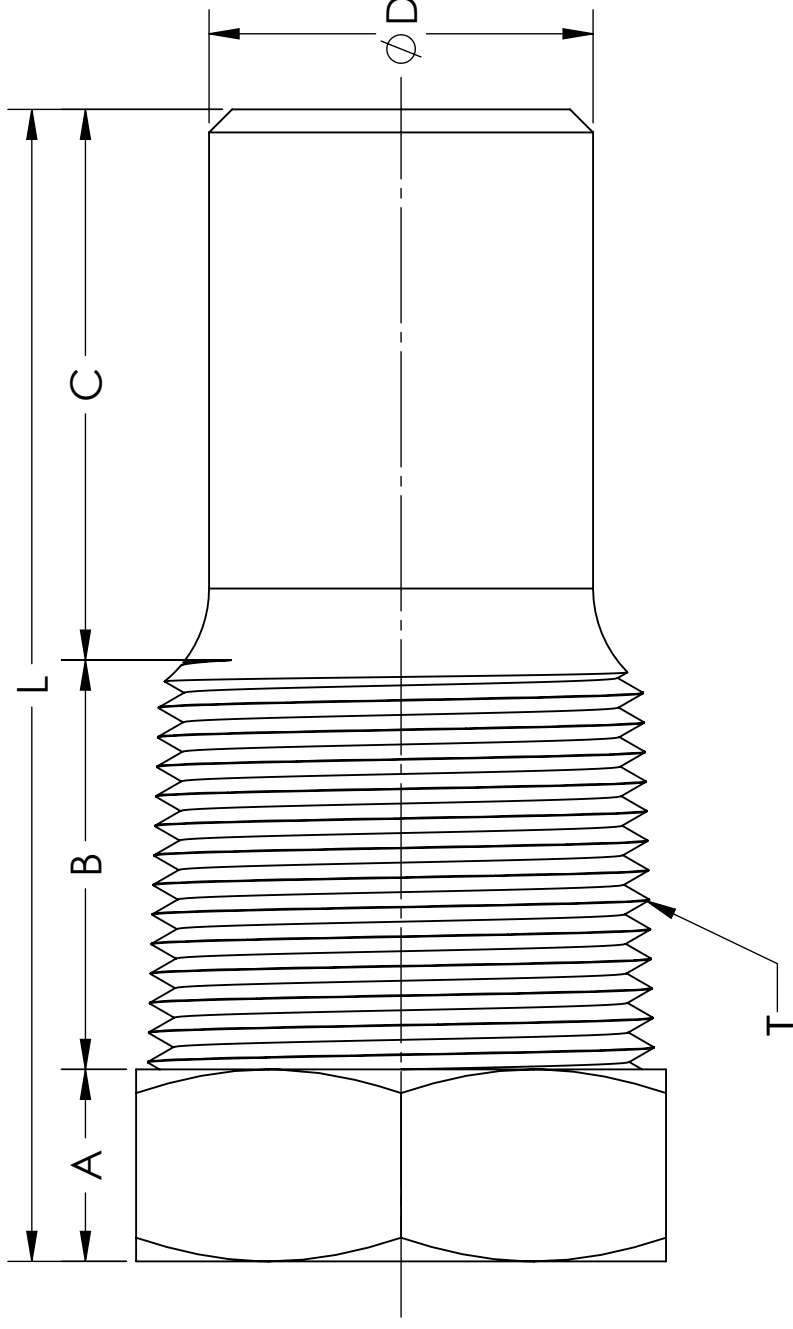
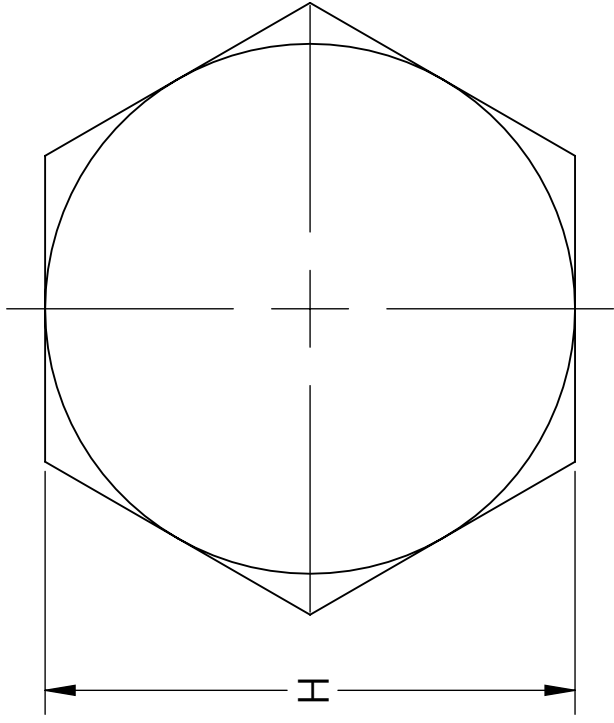
OPTIONS

- Fe/Zn coated per ASTM F1941-10 Carbon Steel per ASTM A108 GR 1144CD
- Type 304 Stainless Steel per ASTM A276 GR XM-21 or ASTM A479 GR XM-19
- Type 316 Stainless Steel per ASTM A276 GR XM-21 or ASTM A479 GR XM-19

NOTES

- These product specifications were correct at the time of publication and are subject to change without notice
- See the Smith-Blair® website for part numbers and ordering information
- See the Smith-Blair® website for warranty information
- See the Smith-Blair® website for corrosion warnings

30 Globe Ave, Texarkana, AR 71854
Ph: 870-773-5127 • Fax: 870-773-5212
Toll-Free Numbers: Ph: 800-643-9705 • Fax: 800-648-6792




NOTES:

1. CONSULT SMITH-BLAIR ENGINEERING FOR MORE INFORMATION
2. 1" ANCHOR STUD SHOWN, 5/8" ANCHOR STUD SIMILAR

Anchor Stud	T	H	Ø D	L	A	B	C
5/8"	1/2" NPT	.88	.605	2.63	(.38)	.81	1.44
1"	1" NPT	1.38	1.00	3.00	(.50)	1.00	1.50

TOLERANCES U.N.O. XXX ±.010 XX ±.015 X ±.020 ANGLES ±1° MACH FIN=V125 FRACTIONS=1/16	NOTES U.N.O. REMOVE BURRS. REMOVE SHARP EDGES. DO NOT SCALE DWG.	APP'D	DATE
ALL DIMENSIONS ARE IN INCHES	TSK NO. N/A	CK'D	DATE
	DRN	IKD	DATE

TITLE
SPECIFICATION
ANCHOR STUDS
(PIPE RESTRAINT)

 Smith-Blair a xylem brand	P/N	VARIOUS
	SPEC_ANCHOR_STUDS.DRW	2
DWG. NO.	10/30/20	REV.

Sheet Size = 11 X 17